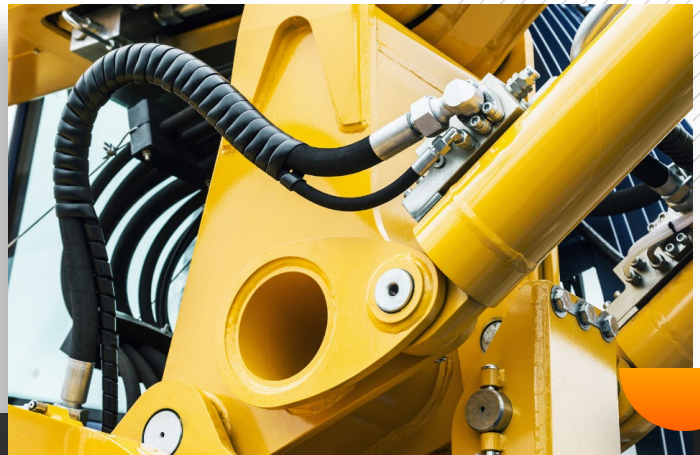


## Problem

The resale value of heavy industry machinery has been determined on factors such as the age and external appearance of a given machine. There was a need for a more reliable method of valuation which employed blockchain and ML methods.



## Solution

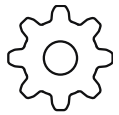
We provided end-to-end consulting to support the company's blockchain project, including researching, creating PoCs, solution architecture, and developing tailor-made software with technical documentation for numerous systems.



Reduce CO2



Limit financial risk



Improve operations

## Result

The company gained a technology partner delivering everything from conception, through architecture and development to deployment. Together, we developed a new, innovative method of determining the resale value in the heavy industry.

*"They are a true partner in discussions about customer needs in a rapidly changing environment, where sustainability plays an increasingly important role. By combining IoT with blockchain, we aim at providing our clients and their customers with valuable and trusted information on the lifetime of heavy-weight machinery in the off-highway industry."*



**Dr. Rafal Sornek**

Senior Vice President, Fortaco Technology

